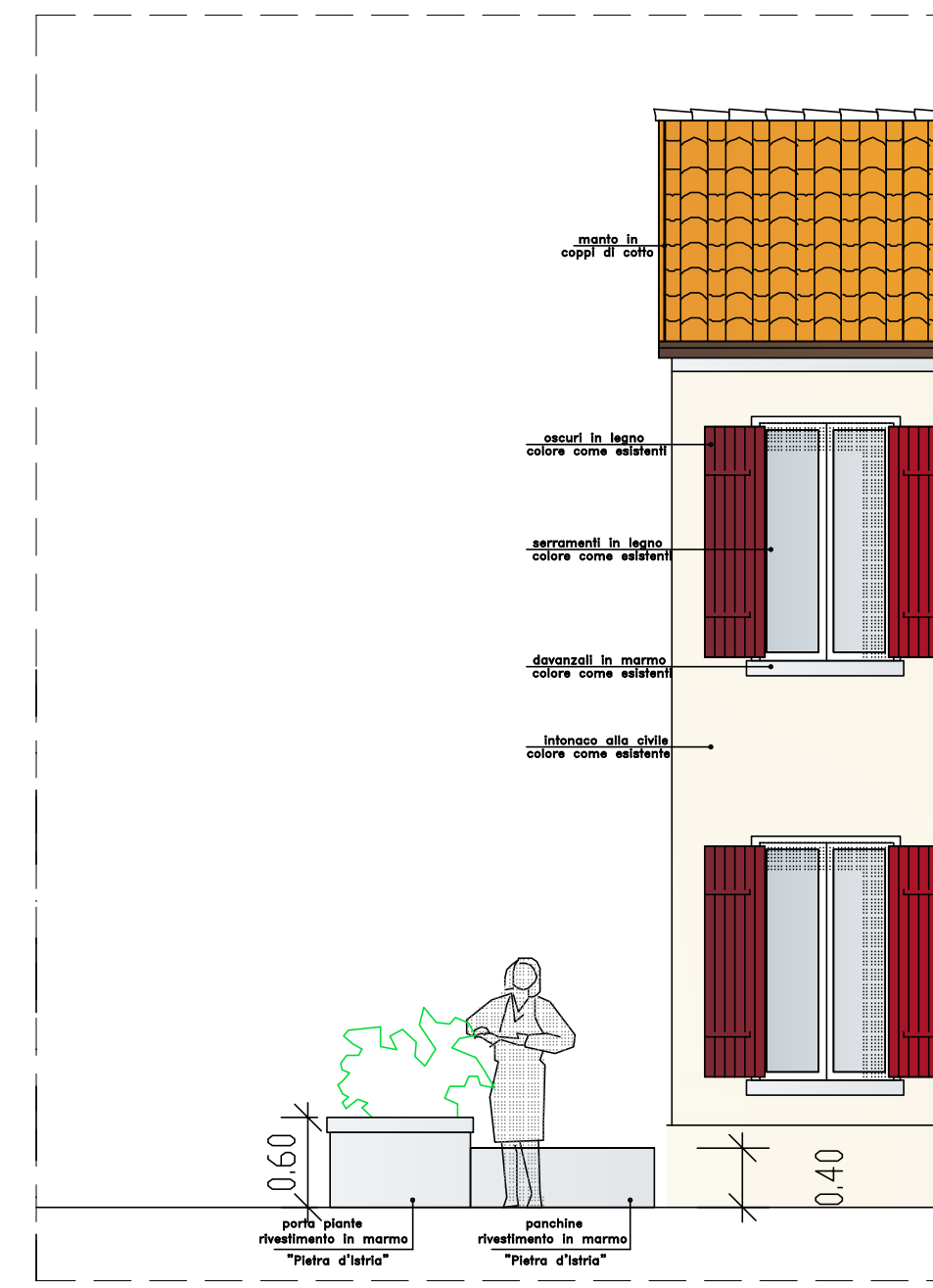
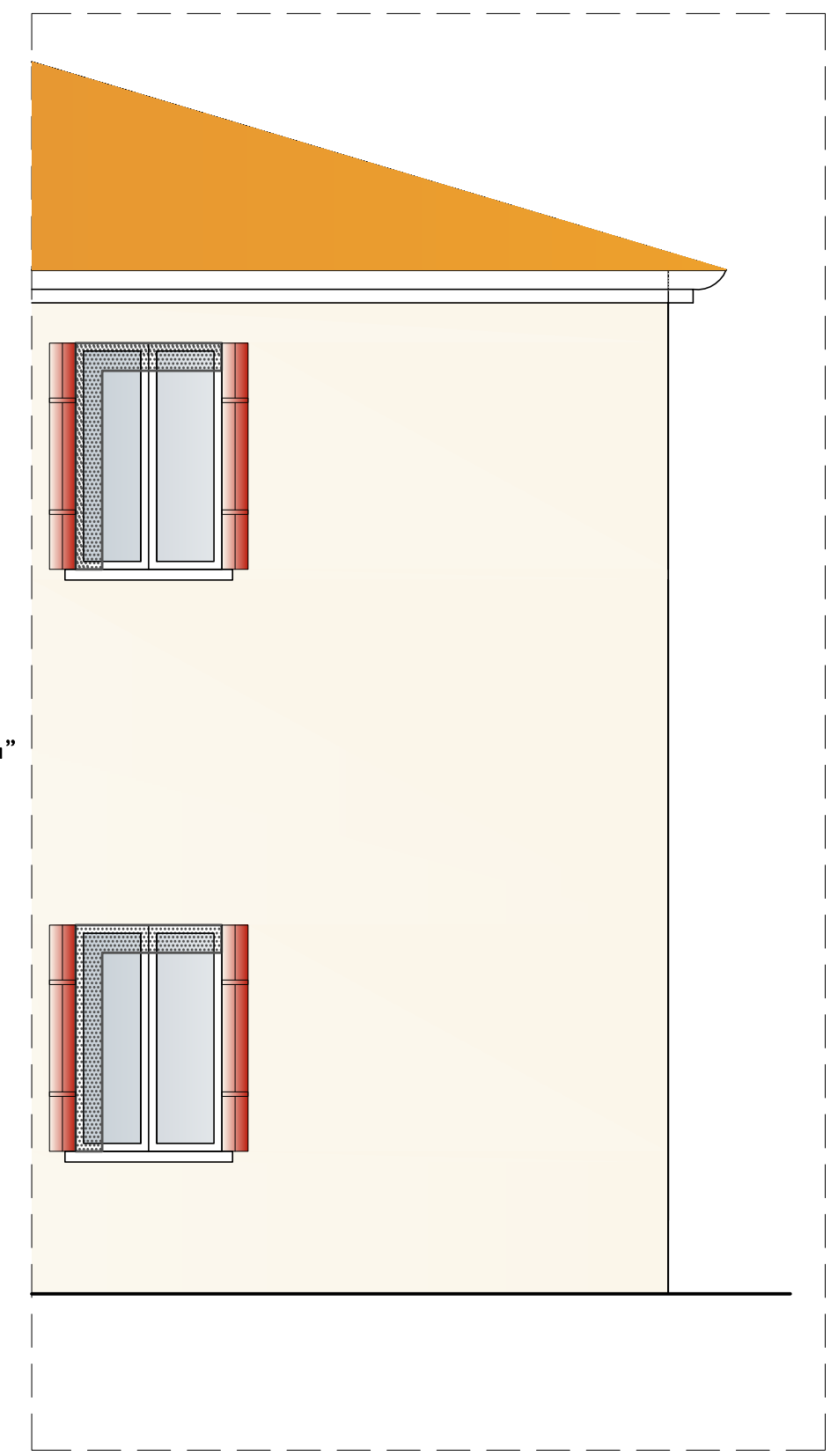
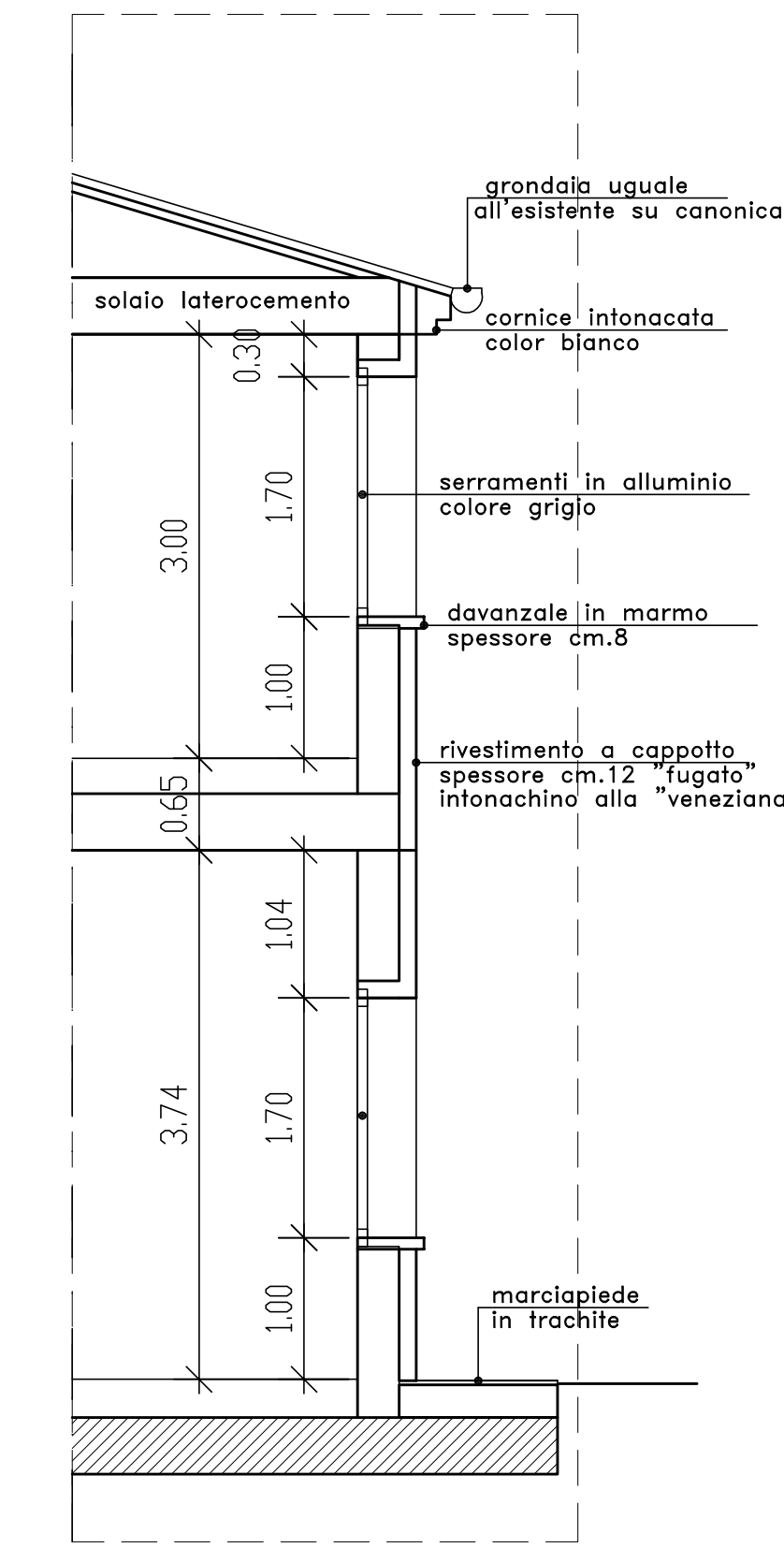
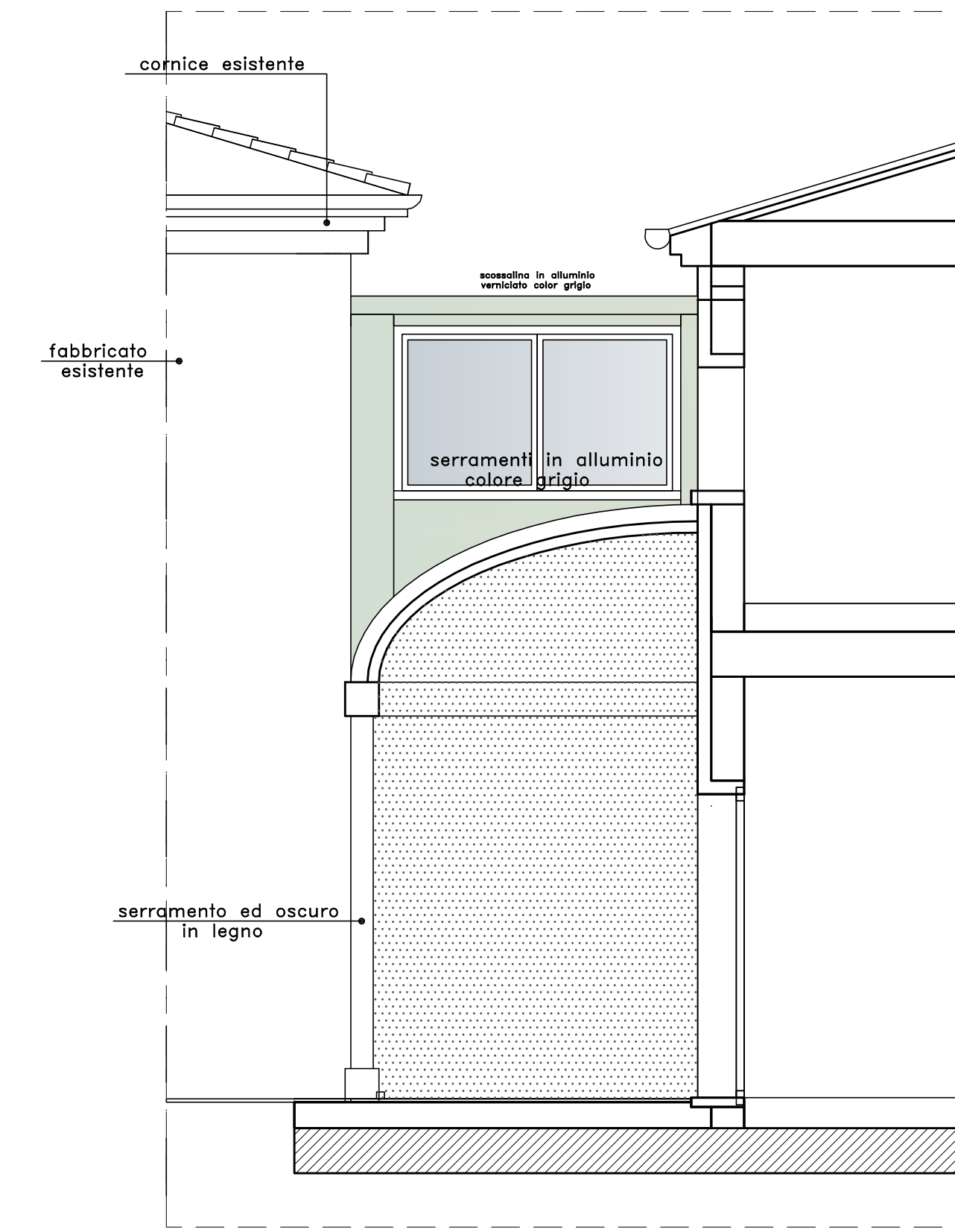


PART. (E)

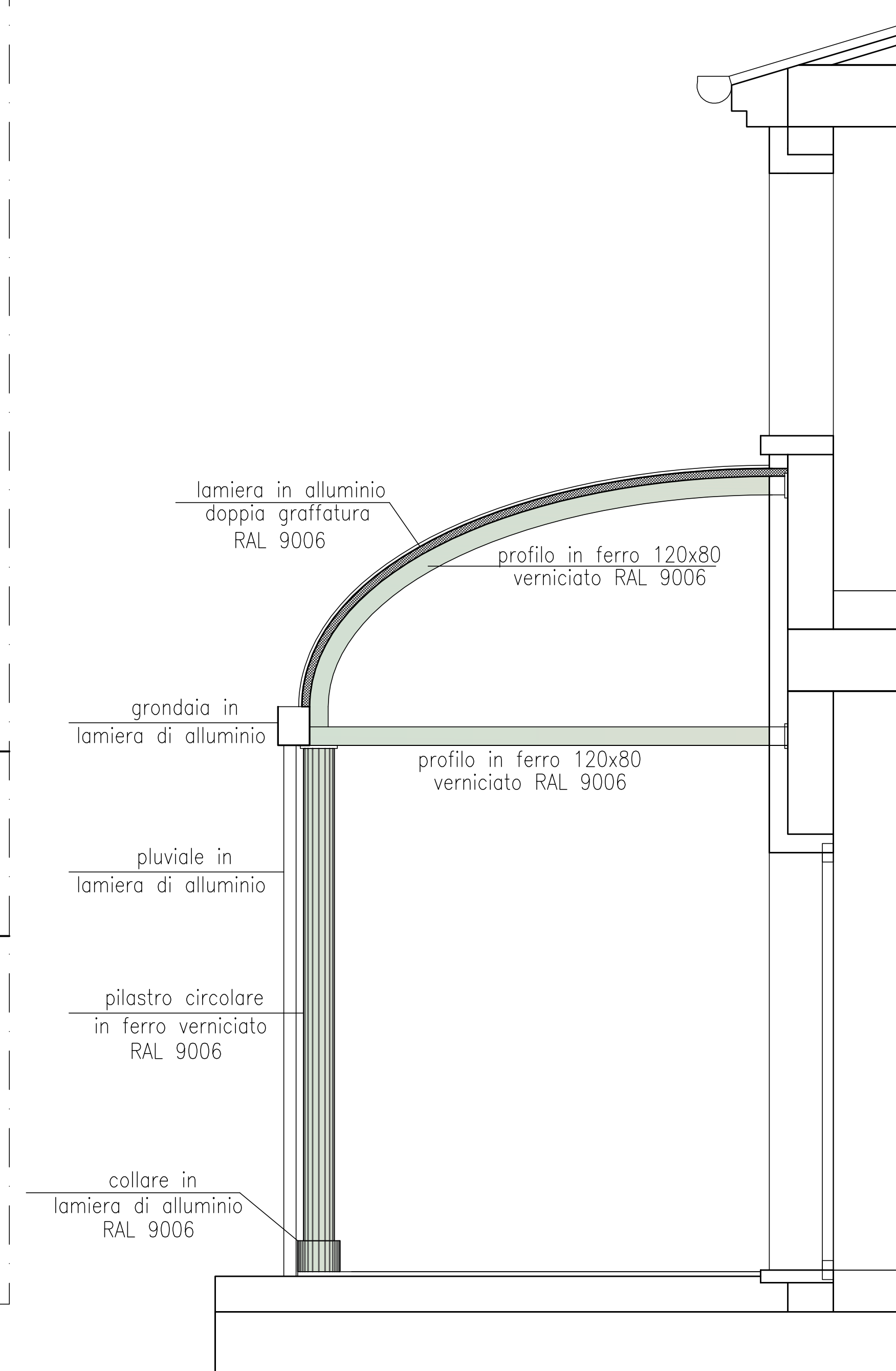
PART. PAVIMENTAZIONE ESTERNA piazzetta centrale



PART. ampliamento Canonica

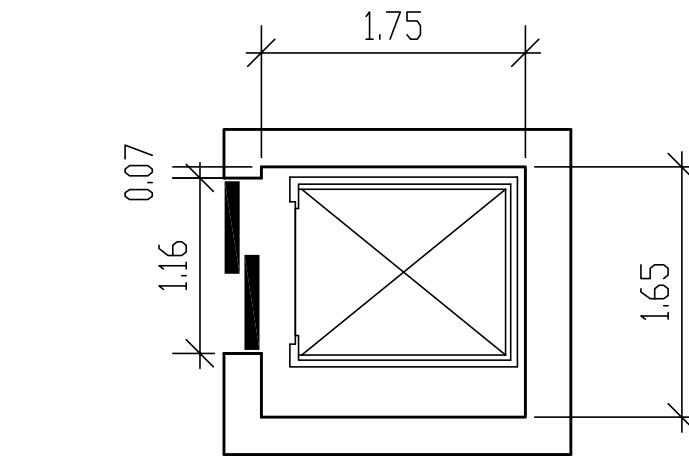


PART. SEZ. S1 e colori



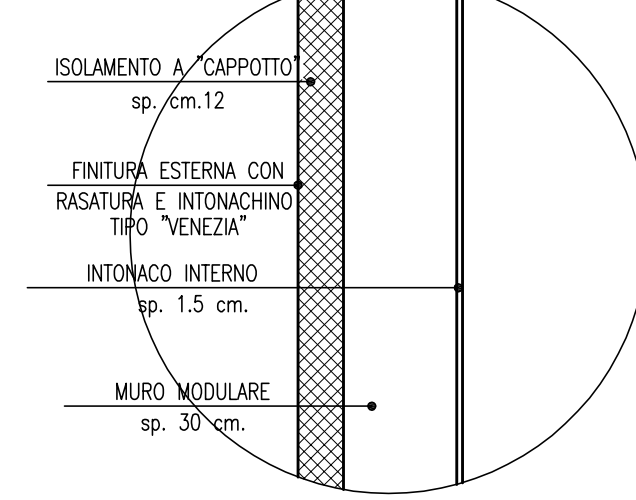
Part. sezione porticato

PART. (D) PART. PAVIMENTAZIONE ESTERNA piazzetta ad est

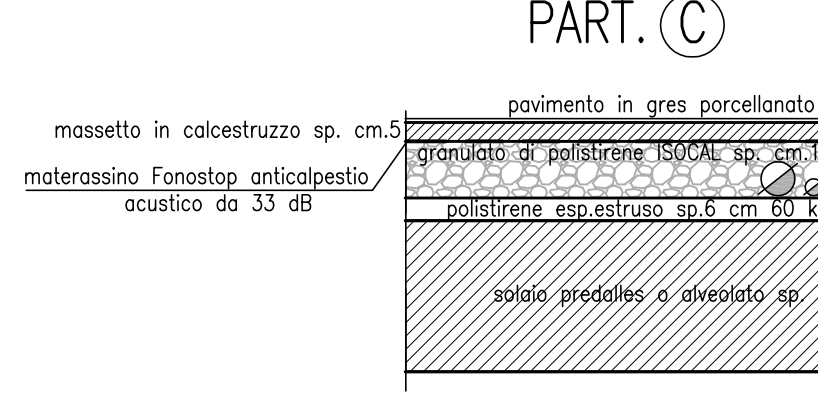


PART. ASCENSORE 8 PERSONE ELETTRICO SENZA VANO MACCHINE

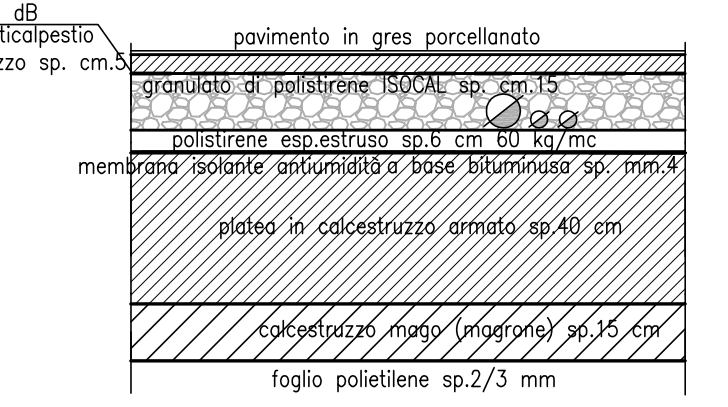
PART. (A) PART. MURATURA PERIMETRALE sc. 1:20



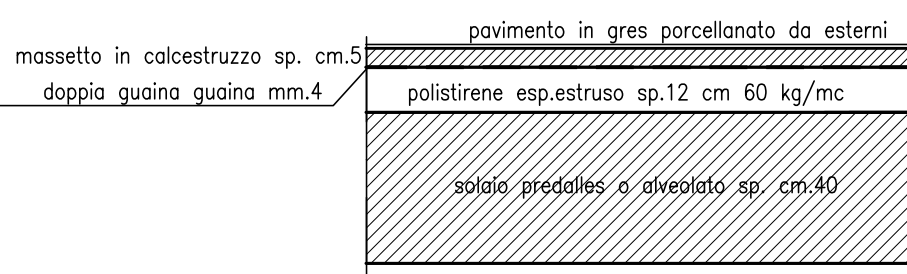
PART. (C)



PART. (B)



PART. (C)



03	25.07.13	BB.AA.	Claudio	VERIFICATO	Ing. M. Niero
02	14.02.13	BB.AA.	Claudio	VERIFICATO	Ing. M. Niero
01	10.12.12	Esecutivo	Claudio	VERIFICATO	Ing. M. Niero
REV.	DATA	DESCRIZIONE REVISIONE	REDATTO	VERIFICATO	VERIFICATO

PROGETTO:		PROGETTISTA	
PIANO PARTICOLAREGGIATO CENTRO PARROCCHIALE DI MAERNE PIAZZA IV NOVEMBRE		Ing. Marco Niero C.F. NRIMRC75508H735P	
ELABORATO		COLLABORAZIONE ARTISTICA	
STATO DI PROGETTO PARTICOLARI COSTRUTTIVI		Arch. Giovanni Fabiano C.F. F086N72546C735H	
PRODOTTO DA		INGEO S.r.l. Società d'Ingegneria	
COMMITTENTE		DIRETTORE TECNICO	
PARROCCHIA CATTEDRA DI SAN PIETRO MAERNE		Ing. Marco Niero C.F. NRIMRC75508H735P	

6.B	SCALA	varie	 società di ingegneria s.r.l.	P.I. 03827860275 Via XXV Aprile, 10 30030 Robegano Salzano Ve Tel.041-482104 Fax. 041-482038 e-mail Ingeo.arl@gmail.com
	Prof.	235		
	Data	Luglio 2013		