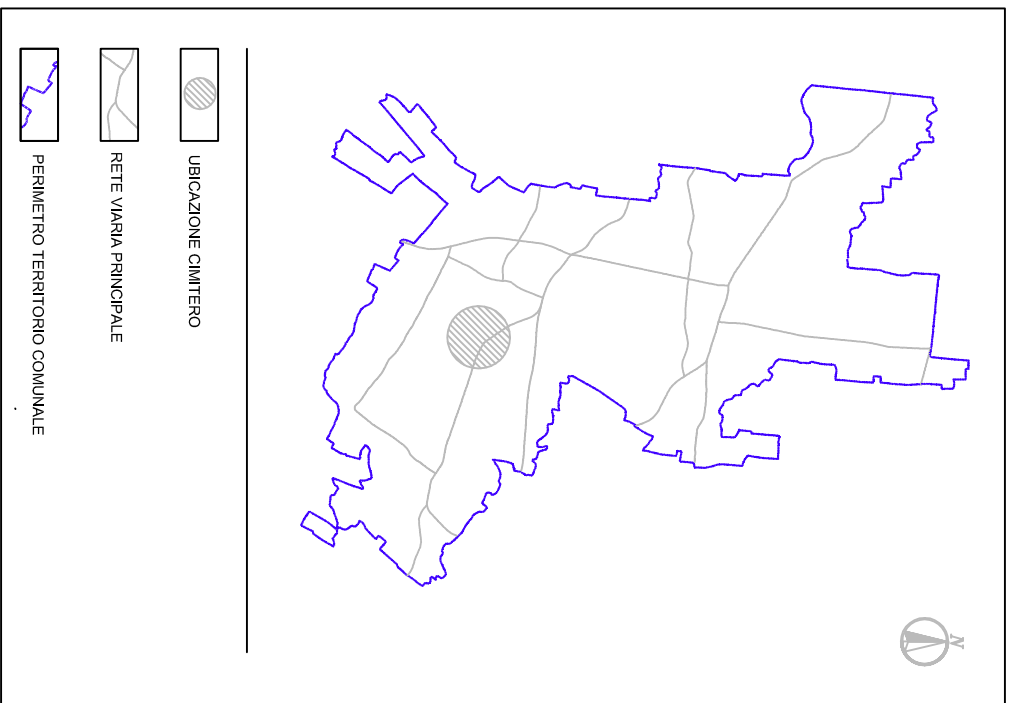
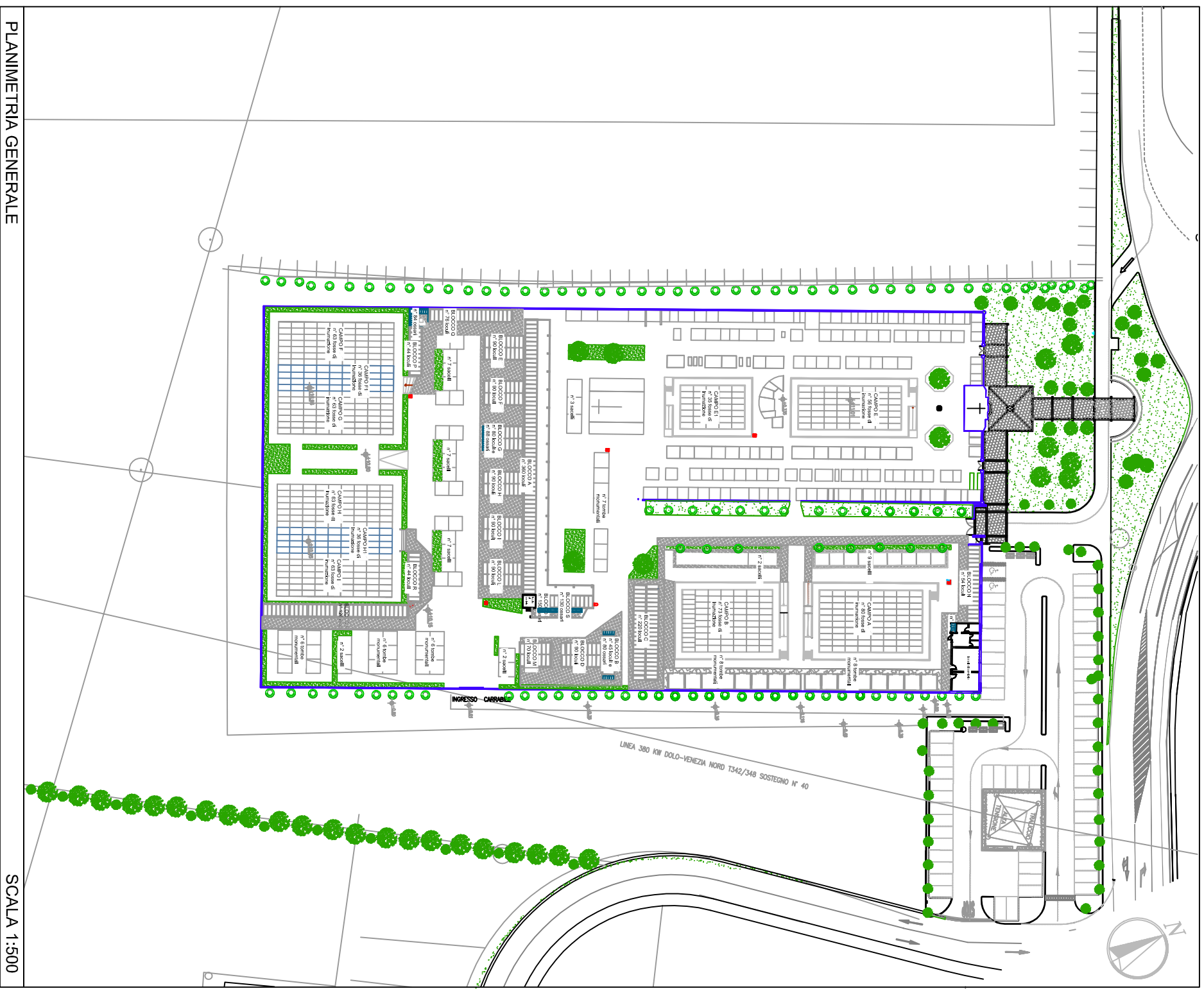


INQUADRAMENTO TERRITORIALE






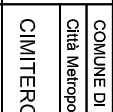
ESTRATTO CATASTALE



PLANIMETRIA GENERALE

LEGENDA

-  fontana
-  marciapiede pavimentato
-  pavimentazione esterna

		COMUNE DI MARTELLAGO	
		Città Metropolitana di Venezia	
		CIMITERO DI MAERNE	
		AGGIORNAMENTO PIANO CIMITERIALE GIUGNO 2019	
tav. 01	file	scala	
	agg. piano 2019.dwg	1:1000 1:500	
Inquadramento territoriale, estratto catastale e planimetria generale			
Responsabile del Procedimento: Ing. Fabio Callegner			
Progettista: arch. Maria Irene Rudolfi			